

LPE 72 with DC-motor

Linear positioning system

**Special features**

- linear positioning system including screwed spindle, controller, absolute measuring system and default analogue target value
- internal control of supply voltage including error messaging
- direct connection to PLC
- solid aluminium housing, protection class IP 64

nominal positioning power	100 N (50 % OT)
self-holding power	100 N
nominal voltage	24 VDC +30/-25 %
nominal current	2.5 A
no-load current	0.5 A
positioning resolution	0.2 % of nominal upstroke
positioning accuracy	0.6% of nominal upstroke
upstroke	120 mm
shock resistance acc. to DIN IEC 68-2-27	-
vibration resistance acc. to DIN IEC 68-2-6	30 Hz 4 g 90 min.
testing	CE, German Lloyd
output shaft	10 h 8 solid circular shaft M6
maximum axial thrust	300 N
maximum radial force	50 N
ambient temperature	0...50 °C
storage temperature	-10...70 °C
protection class	IP 64
weight	1800 g

Technical data

setting speed	A
max. 4000 mm/min	72/1
max. 1000 mm/min	72/2
max. 500 mm/min	72/3
max. 250 mm/min	72/4
default analogue target value	B
2...10 VDC (RL > 2 kΩ)	A
4...20 mA (RL < 500 Ω)	B

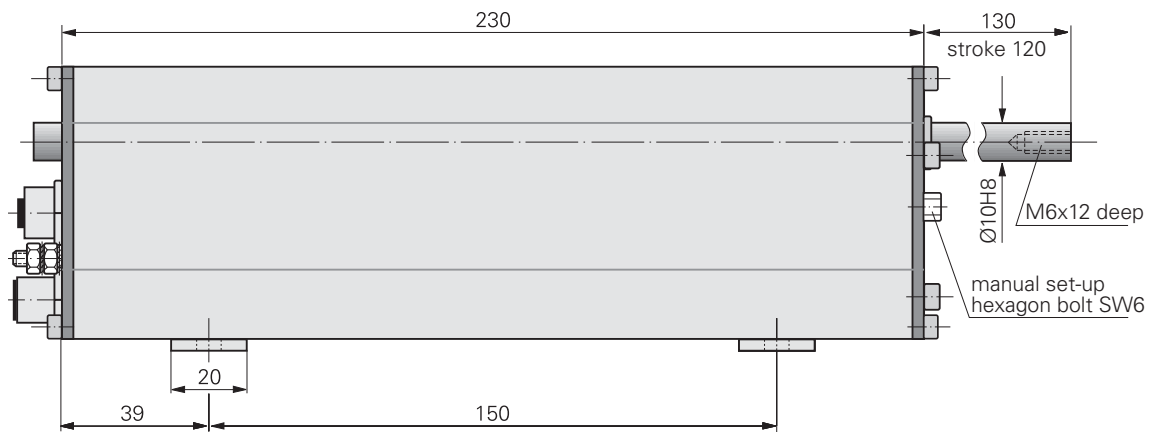
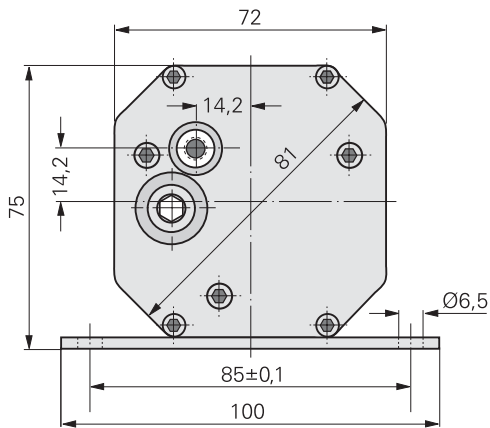
Order key

A	B
LPE	- -

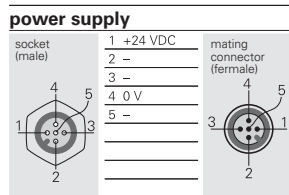
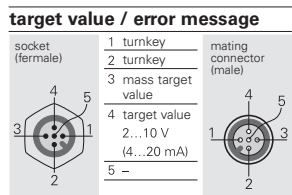
accessories	<input type="checkbox"/> mating connector	9601.-0024
-------------	---	------------

LPE 72 with DC-motor

Dimension drawing



Connection diagram



Functional block diagram

