

PSE 100/200 with DC- or AC-motor



Special features

- complete solution including motor, gear, controller, absolute measuring system and default analogue target value
- positioning enabling via floating contact
- direct connection to PLC
- actual value report
- working range up to 50 (PSE200), respectively 20 (PSE100) revolutions
- solid ABS-housing

nominal power output	PSE200: 3 W (30% OT) PSE100: 0,5 W (100% OT)
nominal current	0,2 A (PSE100), 1 A (PSE200)
no-load current	0,2 A
positioning resolution	0,5 % of positioning range
positioning accuracy	2% of positioning range
positioning range	max. 50 revolutions (PSE200) max. 20 revolutions (PSE100)
shock resistance acc. to DIN IEC 68-2-27	50 g 11 ms
vibration resistance acc. to DIN IEC 68-2-6	10...55 Hz 1,5 mm / 55...1000 Hz 10 g / 10...2000 Hz 5 g
testing	CE
output shaft	12 H8 circular shaft
maximum axial trust	20 N
maximum radial force	30 N
ambient temperature	0...50 °C
storage temperature	-10...70 °C
protection class	IP 55
weight	900 g

Technical Data

	nominal torque	nominal rated speed	A model
PSE100	2,5 Nm	2 min ⁻¹	100/1
	5 Nm	1 min ⁻¹	100/2
	10 Nm	0,5 min ⁻¹	100/3
	10 Nm	0,25 min ⁻¹	100/4
PSE200	1 Nm	30 min ⁻¹	200/1
	5 Nm	5 min ⁻¹	200/2
	10 Nm	2 min ⁻¹	200/3
	10 Nm	1 min ⁻¹	200/4
	10 Nm	0,5 min ⁻¹	200/5
	10 Nm	0,25 min ⁻¹	200/6
default analogue target value			B
	0...10 VDC (RL > 2 kΩ)		A
	0...20 mA (RL < 500 Ω)		B
	4...20 mA (RL < 500 Ω)		C
supply voltage			C
	24 VDC (+20/-15%) only for PSE 200		A
	24 VAC (+6/-15% 50 Hz) only for PSE100		B
	115 VAC (+6/-15% 50 Hz) only for PSE100		C
	230 VAC (+6/-15% 50 Hz) only for PSE100		D
number of revolutions*			D
	max. 50 (PSE200), max. 20 (PSE100)		

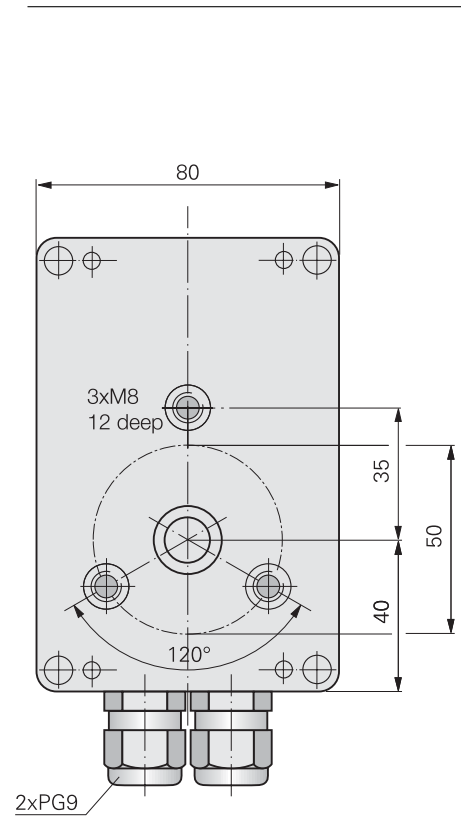
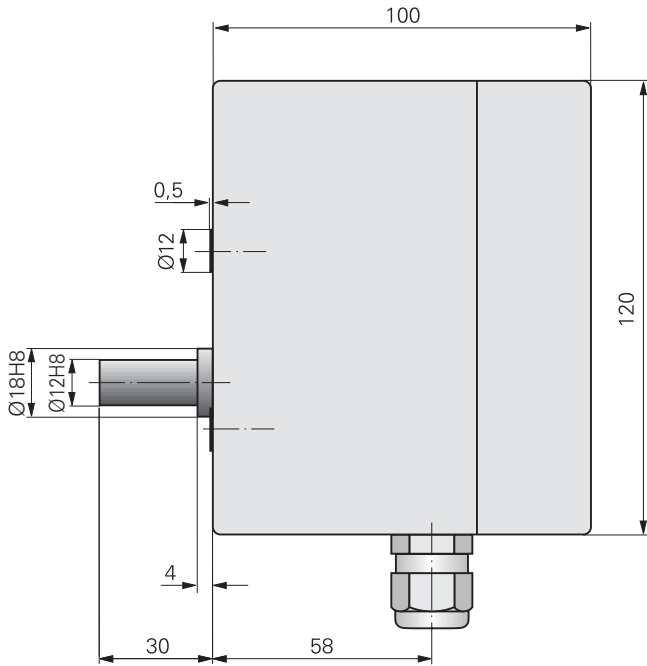
* given in revolutions, max. 50 (20); when < 1 rotation conversion of the given revolutions angle; e.g. 270° correspond to 0,75° revolutions.

Order key

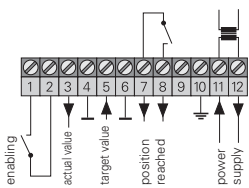
	A	B	C	D
PSE	-	-	-	-

PSE 100/200 with DC- or AC-motor

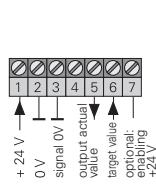
Dimension drawing



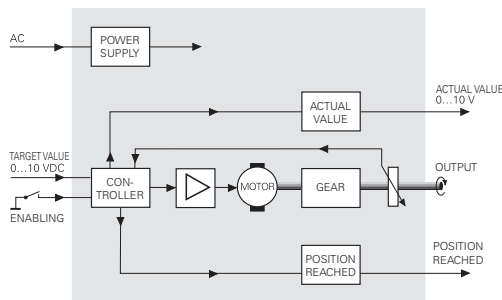
Connection diagram PSE 100



Connection diagram PSE 200



Functional block diagram PSE 100



Functional block diagram PSE 200

