

PSE 21_/23_-8 with DC-Motor

Positioning of auxiliary and positioning axes



Special features

- economically automation
- decentralized intelligence for the discharge of the superordinate control
- complete solution including motor, gear, controller, measuring system and bus interface
- absolute measuring system (optional)
- separate power supply for controller and amplifier
- address may be set using the BUS or a manual decade switch (optional)
- baudrate 125 kB, 250 kB and 500 kB adjustable via switch (optional), (1mB only via bus)

nominal power output	PSE 21_: 4 W, PSE23_: 8 W
start-up duration	50% (basis time 300 s)
supply voltage	24 VDC ± 10%
nominal current	0,7 A
power consumption	0,1 A
position accuracy	0,9 °
position data are acquired directly at the output shaft	
positioning range	limitless
shock resistance as stipulated in DIN IEC 68-2-27	50 g 11 ms
resistance to vibration as stipulated DIN IEC 68-2-6	10...55 Hz 1,5 mm / 55...1000 Hz 10 g / 10...2000 Hz 5 g
testing	CE
output shaft	solid shaft 8 mm or hollowshaft with adjustable collar
maximum axial load	20 N
maximum radial force	40 N
instrument connections	strip terminal max 1,5 mm ²
ambient temperature	0...45 °C
storage temperature	- 10...70 °C
protection class	IP 54
weight	500 g

Technical data

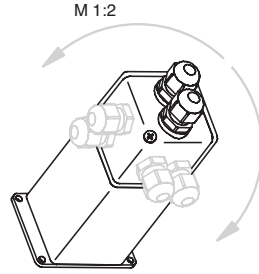
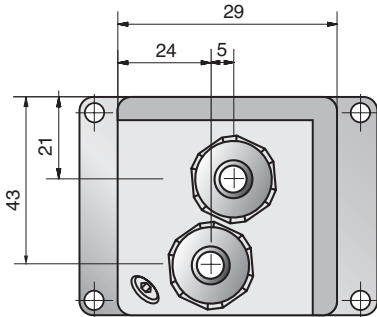
nominal power	nominal torque	nominal rated speed	A model
4 W	1 Nm	40 min ⁻¹	211-8
4 W	2 Nm	20 min ⁻¹	212-8
8 W	1 Nm	80 min ⁻¹	231-8
8 W	2 Nm	40 min ⁻¹	232-8
data interface			B
CANopen / DS 301			C
DeviceNet			DN
address/baudrateswitches			C
none			O
with, baudrate adjustable 500 kB, 250 kB, 125 kB			A
output shaft			D
solid shaft 8 mm			W
hollowshaft with adjustable collar			H
measuring system			E
quasi absolute measuring system			0
absolute measuring system, 64 revolutions			1

Order key

	A	B	C	D	E
PSE	-	-	-	-	-

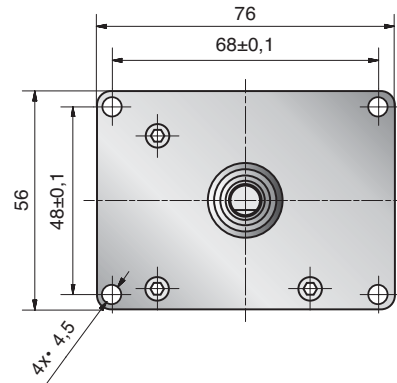
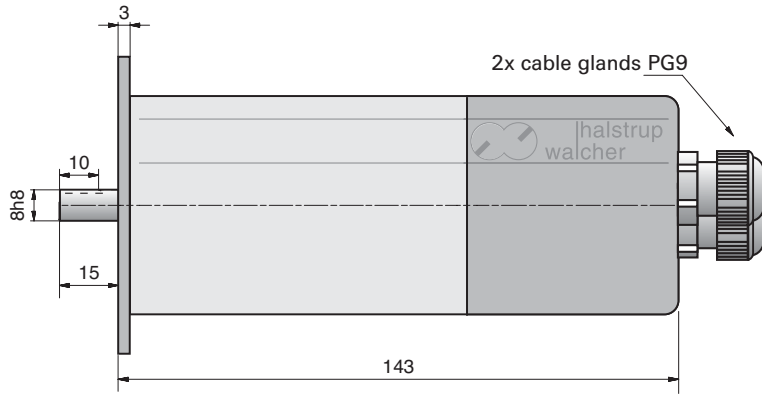
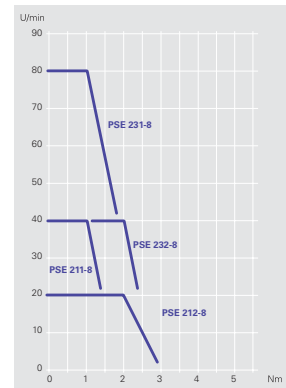
PSE 21_/23_-8

Dimension drawing

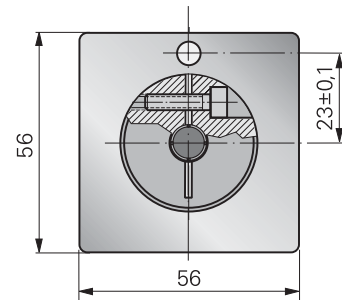
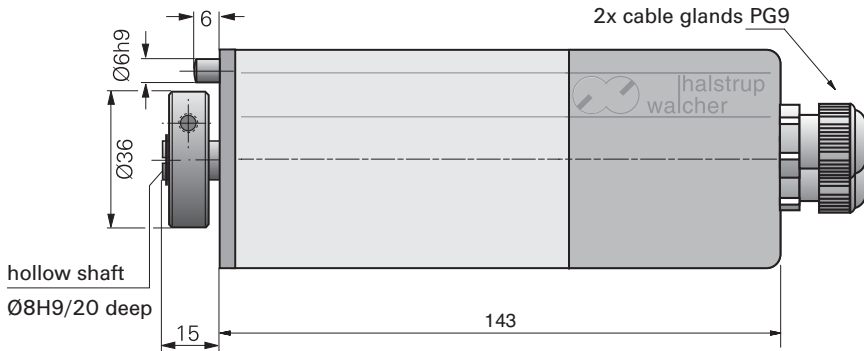


By turn of the cover around 90° are different positions of the cable glands possible

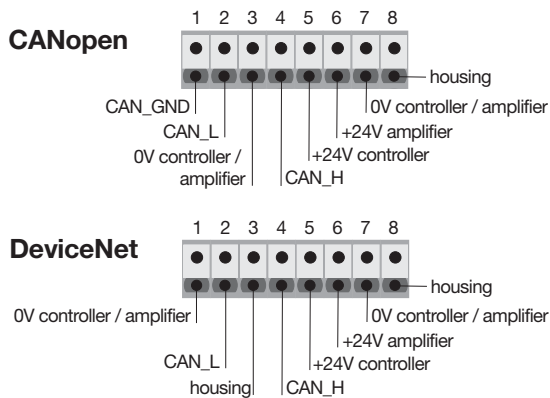
Characteristic line



optional hollow shaft



Connection diagramm



Functional block diagram

