

PSE 30_/32_-14 with brushless DC motor

Positioning of auxiliary and positioning axes



Special features

- complete solution including motor, gear, controller, absolute measuring system and bus interface
- easy mounting due to hollow shaft, manual positioning also possible
- quickly recoups automation costs by considerably reducing setup time
- eliminates the need for reference runs
- jog key operation for manual positioning without engaging the external control module (optional)
- address may be set using the BUS or a manual decade switch, (Sercos III / EtherCat optional)
- optional latch brake for raising holding torque

nominal power output	PSE 30_: 25 W, PSE 32_: 35 W
start-up duration	30 % (basis time 300 s)
supply voltage	24 VDC ± 10 % galvanic separation between control unit and motor
nominal current	PSE 30_: 2 A, PSE 32_: 3 A
power consumption (control unit)	0.1 A
positioning accuracy position data are acquired directly at the output shaft	0.9 °
positioning range	256 rotations, no mechanical limits
shock resistance as stipulated in DIN IEC 68-2-27	50 g 11 ms
resistance to vibration as stipulated in DIN IEC 68-2-6	10...55 Hz 1.5 mm / 55...1000 Hz 10 g / 10...2000 Hz 5 g
testing	CE
output shaft	14 H7 hollow shaft with adjustable collar
maximum axial thrust	20 N
maximum radial force	40 N
ambient temperature	0...45 °C
storage temperature	-10...70 °C
protection class	IP 54
weight	1200 g

Technical data

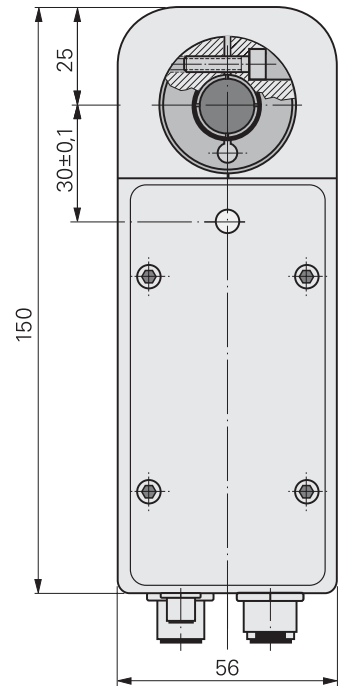
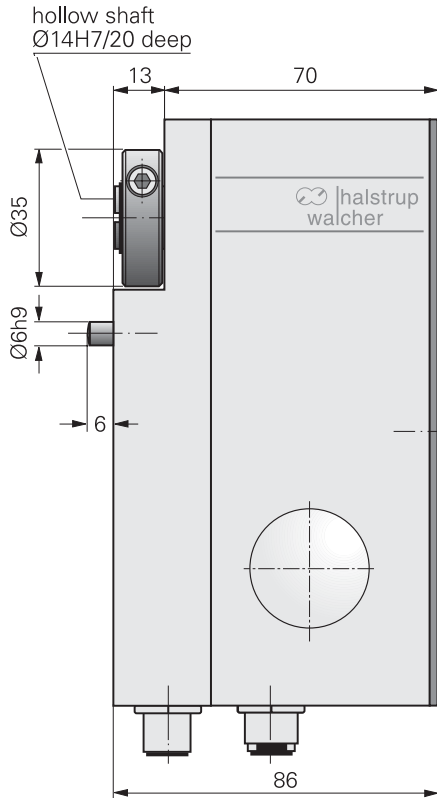
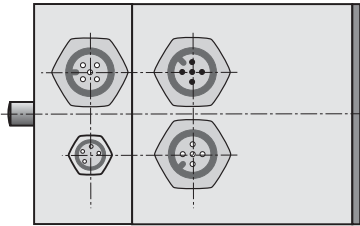
nominal power	nominal torque	self-holding torque	nominal rated speed	A model
25 W	1 Nm	0.5 Nm	230 min ⁻¹	301-14
25 W	2 Nm	1 Nm	115 min ⁻¹	302-14
25 W	5 Nm	2.5 Nm	40 min ⁻¹	305-14
35 W	2 Nm	1 Nm	170 min ⁻¹	322-14
35 W	5 Nm	2.5 Nm	68 min ⁻¹	325-14
data interface				B
Bus cable may be looped through (optional)				
CANopen / DS 301				C
Profibus DP (switchable bus terminator)				DP
DeviceNet				DN
Sercos III				S3
EtherCat				EC
instrument connections				C
*not for Sercos III / EtherCat				
Standard (round socket for power supply and bus)				S
Standard + 2nd connection for data bus (data bus looped through)				B
Standard + connection to jog keys for manual operation*				T
Standard + connection to jog keys for manual operation + 2nd connection to data bus*				TB
optional hand brake				D
no brake				O
with brake (holding torque is equivalent to nominal torque)				M
optional address switch Sercos III / EtherCat				E
no address switch				OA
with address switch				MA

Order key

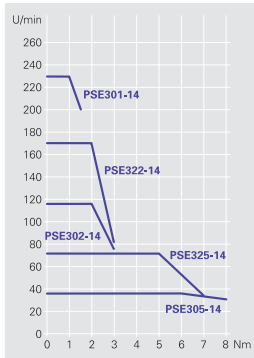
	A	B	C	D	E
PSE - [] - [] - [] - [] - []					
accessories (connectors) 9601-xxxx	C/DP	DN	S3/EC		
<input type="checkbox"/> Standard (connector for bus and power supply)	-0059	-0087	-		
<input type="checkbox"/> Standard + 2nd data bus connector	-0060	-0088	-0112		
<input type="checkbox"/> Standard + jog key connector	-0061	-0089	-		
<input type="checkbox"/> Standard + 2nd data bus connector + jog key connector	-0062	-0090	-		

PSE 30_/32_-14 with brushless DC motor

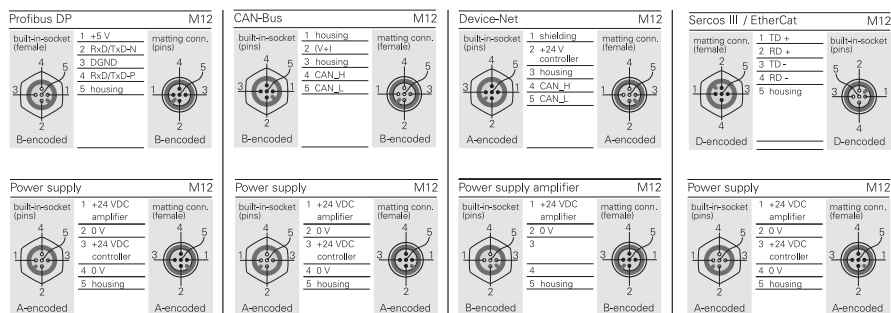
Dimension drawing



Characteristic line



Connection diagram



Functional block diagram

