

## PSE 37\_/39\_-8/-14 RD in stainless steel housing with brushless DC motor

### Positioning of auxiliary and positioning axes



#### Special features

- complete solution including motor, gear, controller, absolute measuring system and bus interface
- quickly recoups automation costs by considerably reducing setup time
- eliminates the need for reference runs
- address may be set using the BUS or a manual decade switch (optional)
- bus cable may be looped through
- V4A stainless steel housing in "Hygienic Design"

nominal power output	PSE 37_: 20 W, PSE 39_: 35 W
start-up duration	30 % (basis time 300 s)
supply voltage	24 VDC ± 10 % galvanic separation between control unit and motor
nominal current	PSE 37_: 2 A, PSE 39_: 3 A
power consumption (control unit)	0,1 A
positioning accuracy position data are acquired directly at the output shaft	0,9 °
positioning range	256 rotations no mechanical limits
shock resistance as stipulated DIN IEC 68-2-27	50 g 11 ms
resistance to vibration as stipulated in DIN IEC 68-2-6	10...55 Hz 1,5 mm / 55...1000 Hz 10 g / 10...2000 Hz 5 g
testing	CE
output shaft	external square 10 mm or 8 H9/14 H7 hollow shaft with adjustable collar
maximum axial thrust	20 N
maximum radial force	40 N
ambient temperature	0...45 °C
storage temperature	-10...70 °C
protection class	IP67 when in operation IP68 when not operation
V4A design for housing	
weight	1800 g

#### Technical Data

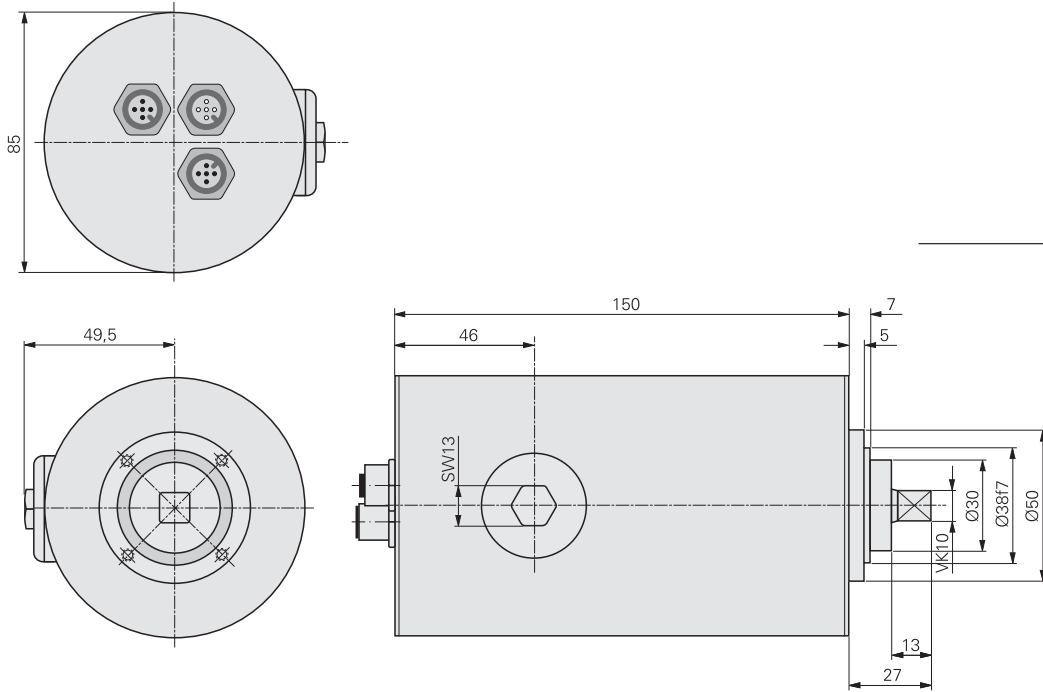
nominal power	nominal torque	self-holding torque	nominal rated speed	<b>A</b> model
20 W	1 Nm	0,5 Nm	180 min <sup>-1</sup>	<b>371-RD</b>
20 W	2 Nm	1 Nm	100 min <sup>-1</sup>	<b>372-RD</b>
20 W	5 Nm	2,5 Nm	35 min <sup>-1</sup>	<b>375-RD</b>
35 W	2 Nm	1 Nm	125 min <sup>-1</sup>	<b>392-RD</b>
35 W	5 Nm	2,5 Nm	50 min <sup>-1</sup>	<b>395-RD</b>
data interface				<b>B</b>
CANopen / DS 301				<b>C</b>
Profibus DP (switchable bus terminator)				<b>DP</b>
DeviceNet				<b>DN</b>
Sercos III				<b>S3</b>
EtherCat				<b>EC</b>
Bus cable may be looped through				
optional address switch				<b>C</b>
no address switch				<b>O</b>
with address switch				<b>A</b>
output shaft				<b>D</b>
external square, 10 mm				<b>V</b>
8 H9 hollow shaft with adjustable collar				<b>H8</b>
14 H7 hollow shaft with adjustable collar				<b>H14</b>
instrument connections				
round socket for power supply and bus + 2nd connection for data bus				

#### Order key

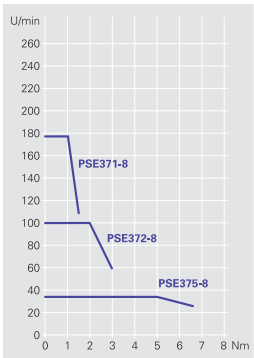
	<b>A</b>	<b>B</b>	<b>C</b>	<b>D</b>
PSE - [ ] - [ ] - [ ] - [ ]				
accessories (connectors)				
<input type="checkbox"/> Standard (connector for bus and power supply)				<b>9601-0076</b>
<input type="checkbox"/> Standard + 2nd data bus connector				<b>9601-0077</b>

**PSE 37\_/39\_-8/-14 RD with brushless DC motor**

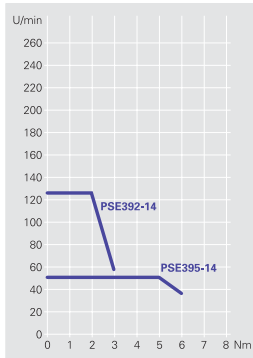
**Dimension drawing**



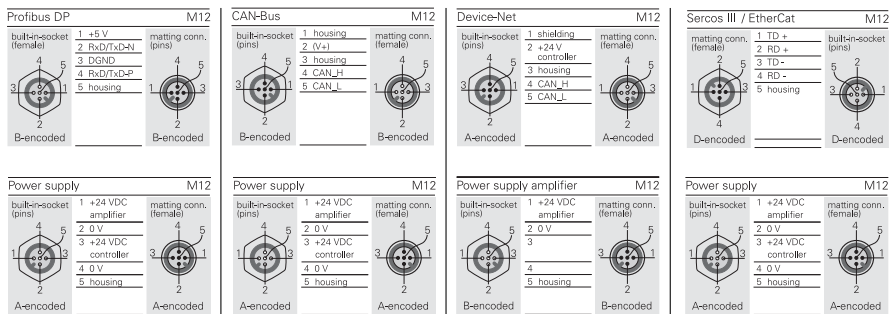
**Characteristic line**



**Characteristic line**



**Connection diagram**



**Functional block diagram**

